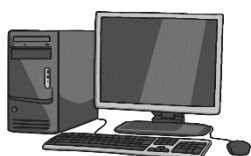


Suggested Timetable for KS1 and KS2 Home Learning

This timetable is designed to support your Home Learning during school closures. It has been put together as a support tool, for children and parents who might benefit from more structure. This timetable is not a long term solution to Home Learning and please be assured that this is currently being looked into.



Online Learning

9:00 – 10:00: Online Learning via Spelling Shed, Sum Dog, Times Tables Rock Stars or Live Read Write Inc Sessions



Literacy in Home Learning Pack

10:00 – 10:30: Literacy Tasks in Year Group Home Learning Pack



Break

10:30 – 11:00: Snack and Break (in a garden if possible)



Maths in Home Learning Pack

11:00 – 11:30: Maths Tasks in Year Group Home Learning Pack



Lunchtime

11:30 – 12:30: Lunch and Break (in a garden if possible)



Reading

12:30 – 13:30: Read a Book or Online Reading



Free Learning

13:30 – 14:30: What do you want to find out more about? Are there any practical activities you want to have a go at? Look on the Home Learning page on our website for some ideas!



Physical Activity

14:30 – 15:00: Joe Wicks YouTube P.E. or other Physical Activity