



Knowledge Organiser

Art: People and Places

Year 3

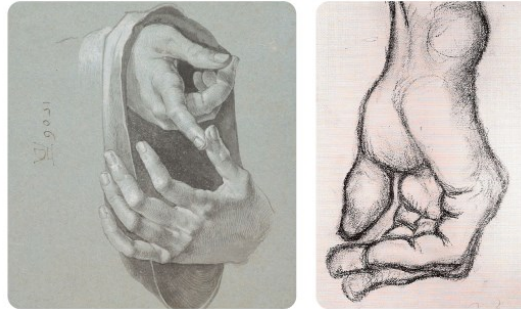
What I already know...

Artists use a range of different styles and techniques.

What I can already do...

Give reasons for choice of materials and colours.

Explore shading with a pencil.



Need to dos...

- I can create artwork in the style of LS Lowry
- I can draw my hand and use drawing techniques such as shading and cross-hatching to add detail.
- I can use digital images to create a collage of my local urban landscape.
- I can create a piece of artwork to show children playing inspired by LS Lowry.

Need to knows...

- Artists can draw figures using simple, fluid lines and shapes.
- LS Lowry was an artist who painted urban landscapes of Manchester. People called his figures 'matchstick men'.
- An urban landscape is a picture of a town or city.
- LS Lowry created artwork based on real events and his memories.

Going to Work by LS Lowry



LS Lowry

LS Lowry was an artist who lived from 1887 to 1976. He was famous for his simplistic, elongated figure drawings and paintings of the industrial urban landscapes of Manchester in the north of England.

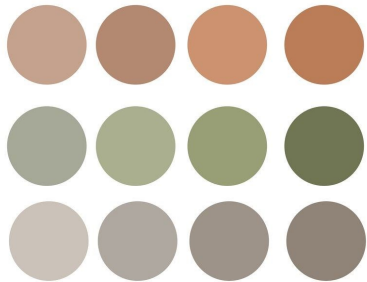


Subject

A person or thing that is being described

Abstract

A distorted representation consisting of shapes and patterns



Muted colours

Muted

Soft in colour instead of bright

Urban Landscape

A drawings of towns and cities shaped by the people and buildings found there.



Lesson Sequence

Lesson 1

Can you create observational drawings of the human figure in a variety of poses?

Lesson 2

Can you draw human figures in the style of LS Lowry?

Lesson 3

Can you add detail, tone and shading to your drawing using cross-hatching?

Lesson 4

Can you create a collage of Truro using digital images?

Lesson 5

Can you work in the style of LS Lowry's to create a painting entitled Coming Out of School?

Lesson 6 (End Point)

Can you evaluate your artwork and suggest ways to adapt and improve it?